



Maps for the People

Salewa Ogunmefun
PA Voice
Executive Director



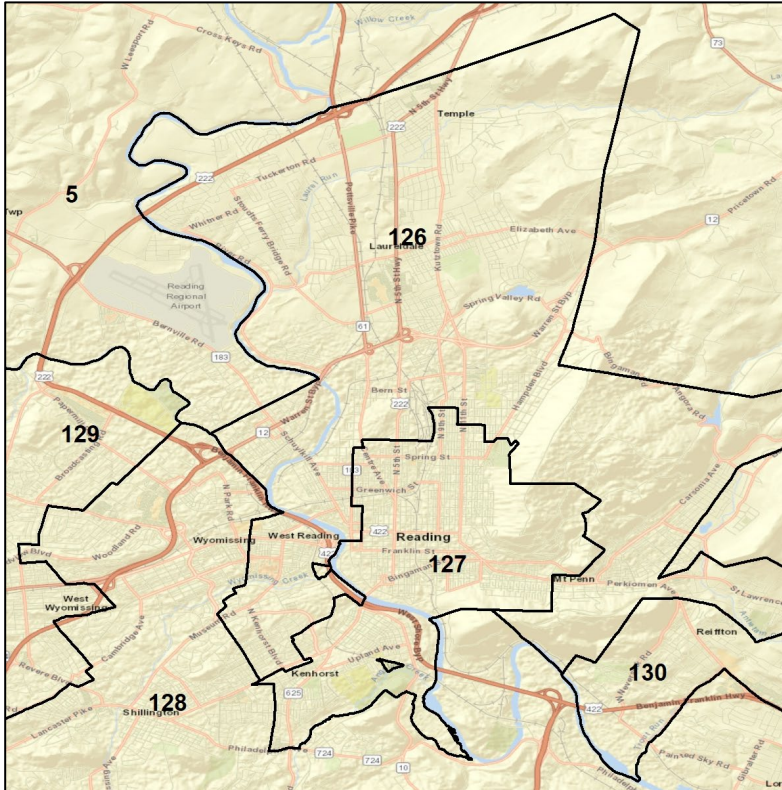
**Keystone
Counts**



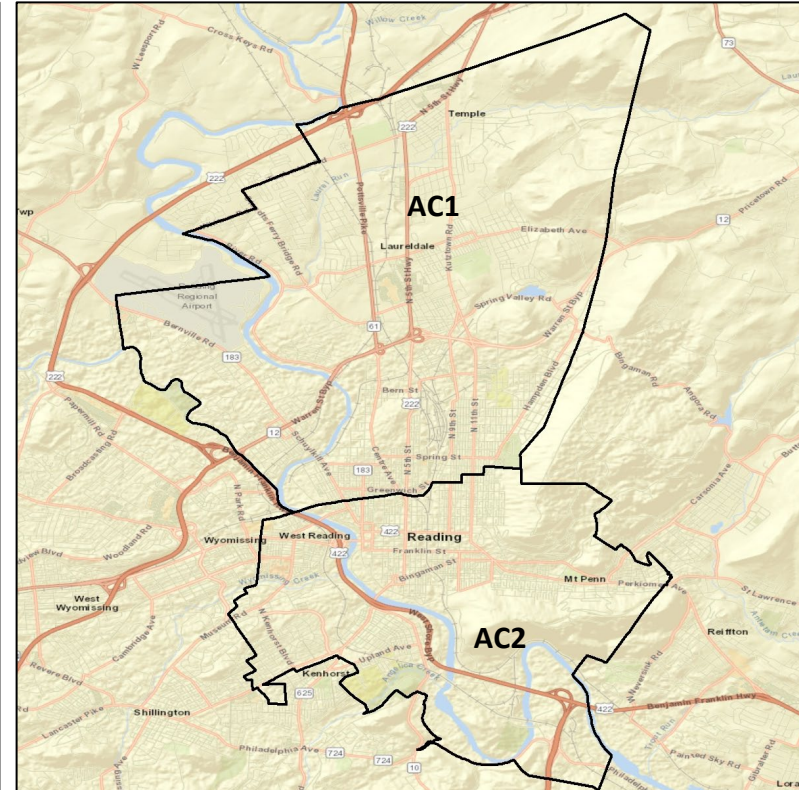
Pennsylvania State House: Berks

Context

Current



Map AC



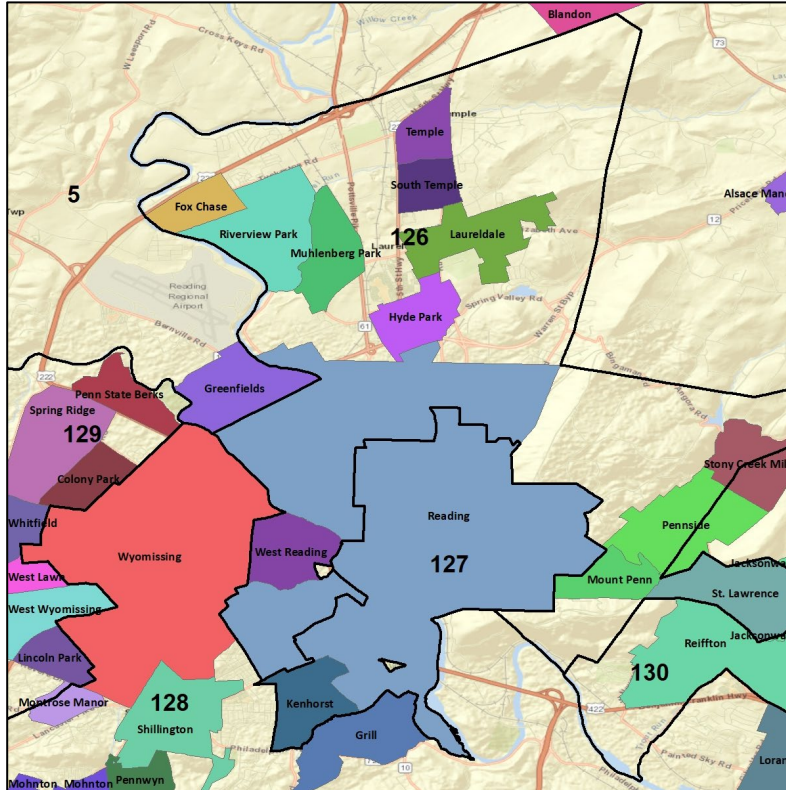
	126	127	AC1	AC2
Total Population	68,940	69,766	64,099	64,017
Deviation	4,887	5,713	46	-36
API VAP	2%	2%	2%	2%
AA VAP	11%	16%	12%	16%
Latino VAP	38%	64%	50%	57%
POC VAP	49%	76%	61%	70%
POC CVAP	40%	66%	51%	61%
POC Total Pop.	55%	80%	67%	75%

State House District
 County Border

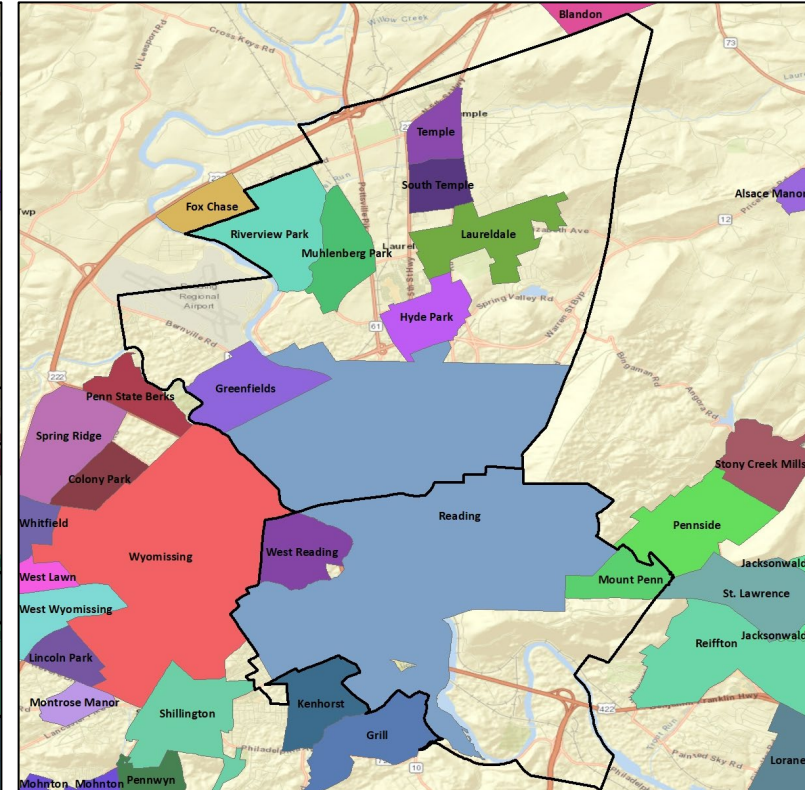
Pennsylvania State House: Berks

Cities and Places

Current



Map AC



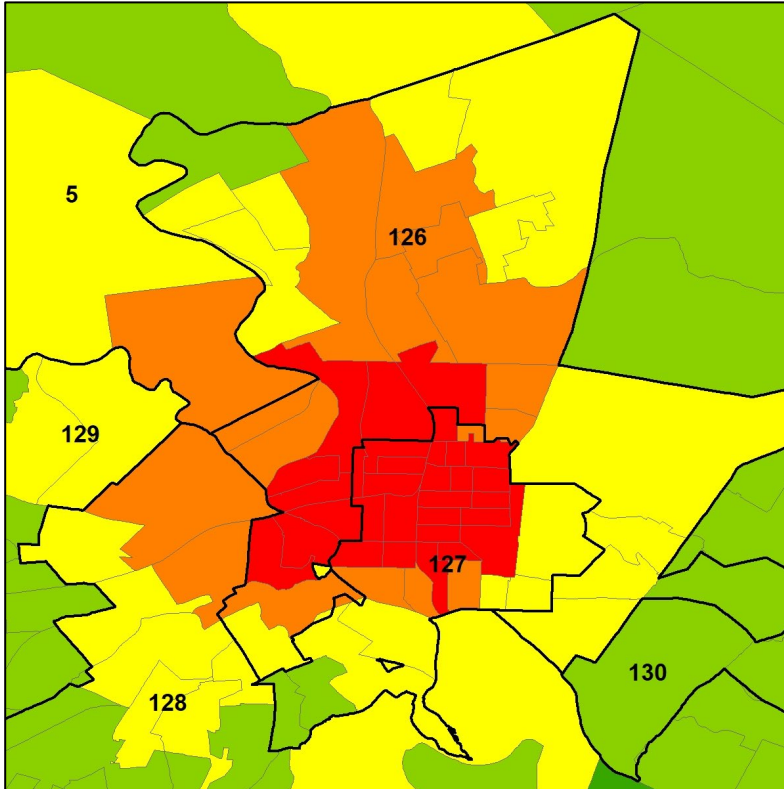
	126	127	AC1	AC2
Total Population	68,940	69,766	64,099	64,017
Deviation	4,887	5,713	46	-36
API VAP	2%	2%	2%	2%
AA VAP	11%	16%	12%	16%
Latino VAP	38%	64%	50%	57%
POC VAP	49%	76%	61%	70%
POC CVAP	40%	66%	51%	61%
POC Total Pop.	55%	80%	67%	75%

State House District
 County Border

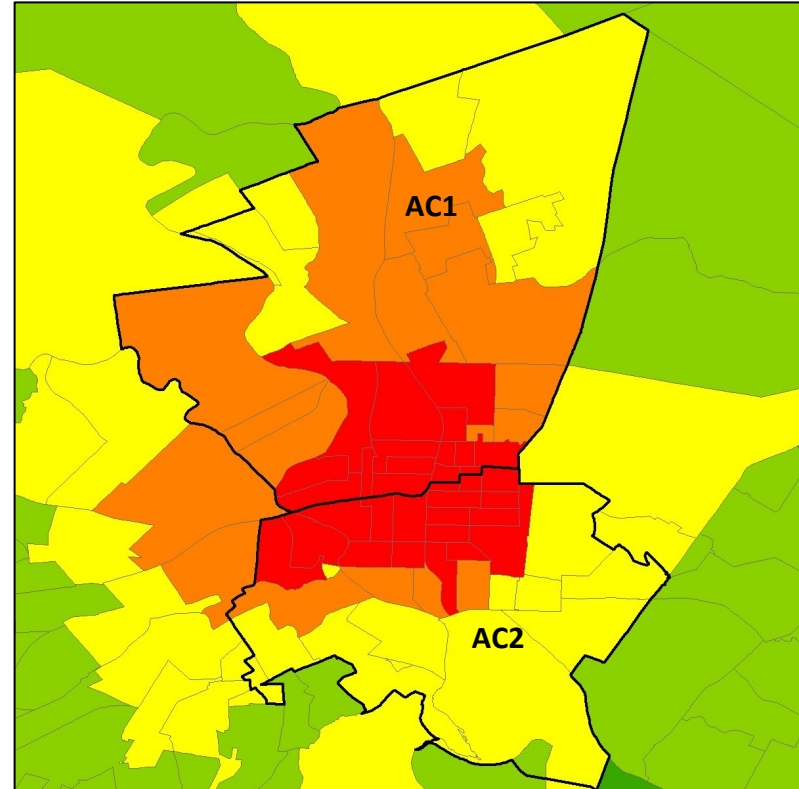
Pennsylvania State House: Berks

Concentration of Coalition Partners by Voting Precinct

Current



Map AC



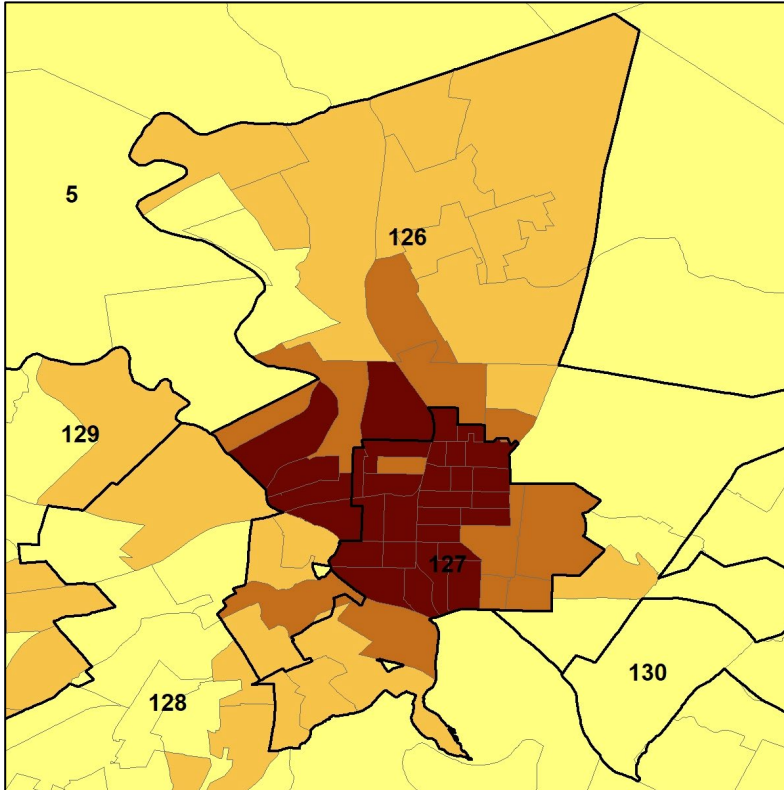
	126	127	AC1	AC2
Total Population	68,940	69,766	64,099	64,017
Deviation	4,887	5,713	46	-36
API VAP	2%	2%	2%	2%
AA VAP	11%	16%	12%	16%
Latino VAP	38%	64%	50%	57%
POC VAP	49%	76%	61%	70%
POC CVAP	40%	66%	51%	61%
POC Total Pop.	55%	80%	67%	75%



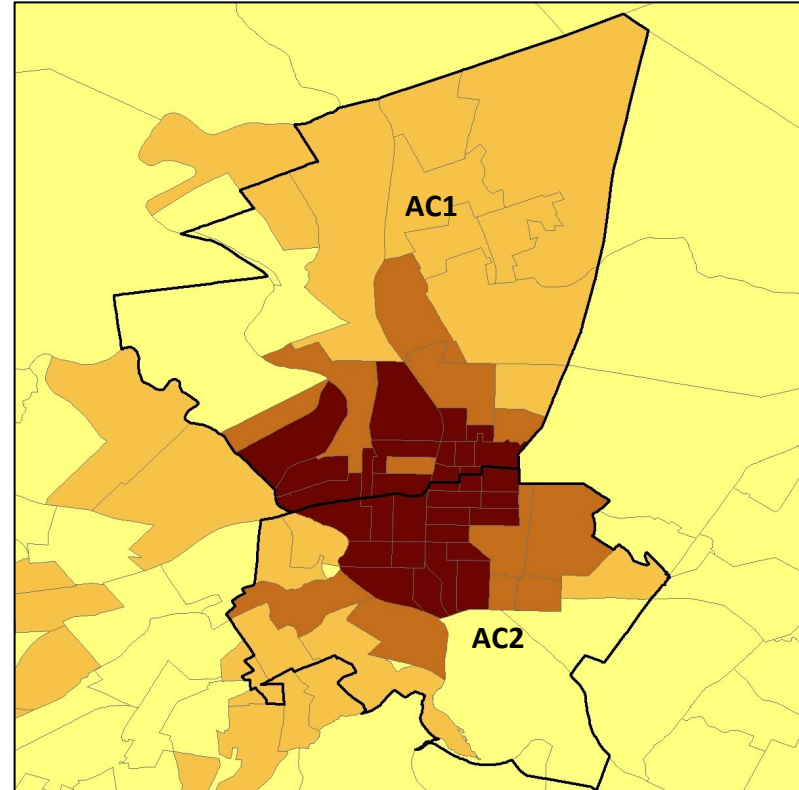
Pennsylvania State House: Berks

% People of Color VAP by Voting Precinct

Current



Map AC



	126	127	AC1	AC2
Total Population	68,940	69,766	64,099	64,017
Deviation	4,887	5,713	46	-36
API VAP	2%	2%	2%	2%
AA VAP	11%	16%	12%	16%
Latino VAP	38%	64%	50%	57%
POC VAP	49%	76%	61%	70%
POC CVAP	40%	66%	51%	61%
POC Total Pop.	55%	80%	67%	75%

State House District

County Border

Below 25%

25 - 50%

50 - 75%

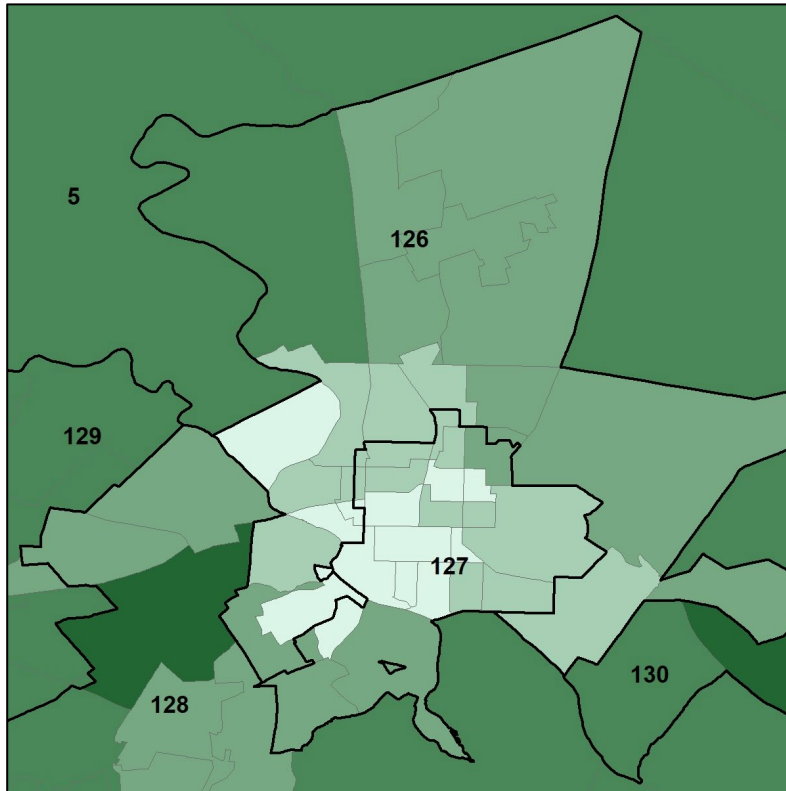
Over 75%

No People

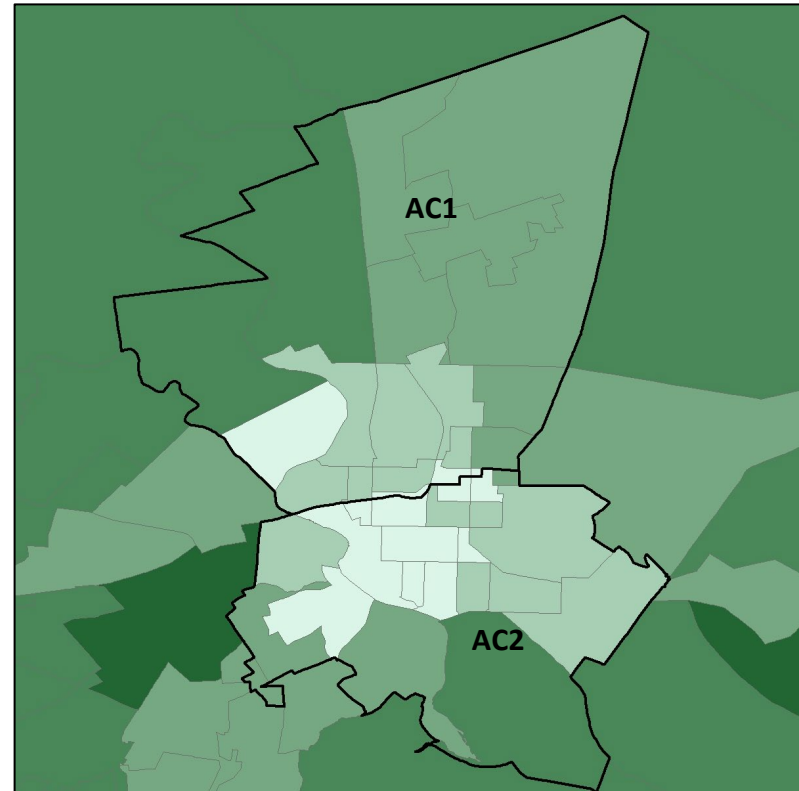
Pennsylvania State House: Berks

Median Household Income by Census Block Group

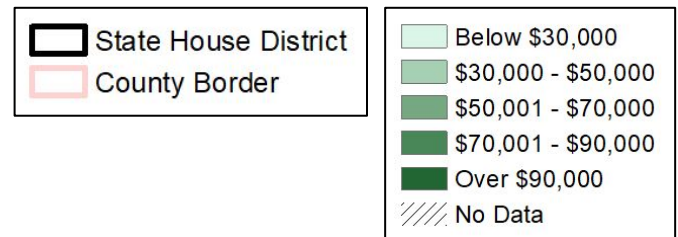
Current



Map AC



	126	127	AC1	AC2
Total Population	68,940	69,766	64,099	64,017
Deviation	4,887	5,713	46	-36
API VAP	2%	2%	2%	2%
AA VAP	11%	16%	12%	16%
Latino VAP	38%	64%	50%	57%
POC VAP	49%	76%	61%	70%
POC CVAP	40%	66%	51%	61%
POC Total Pop.	55%	80%	67%	75%

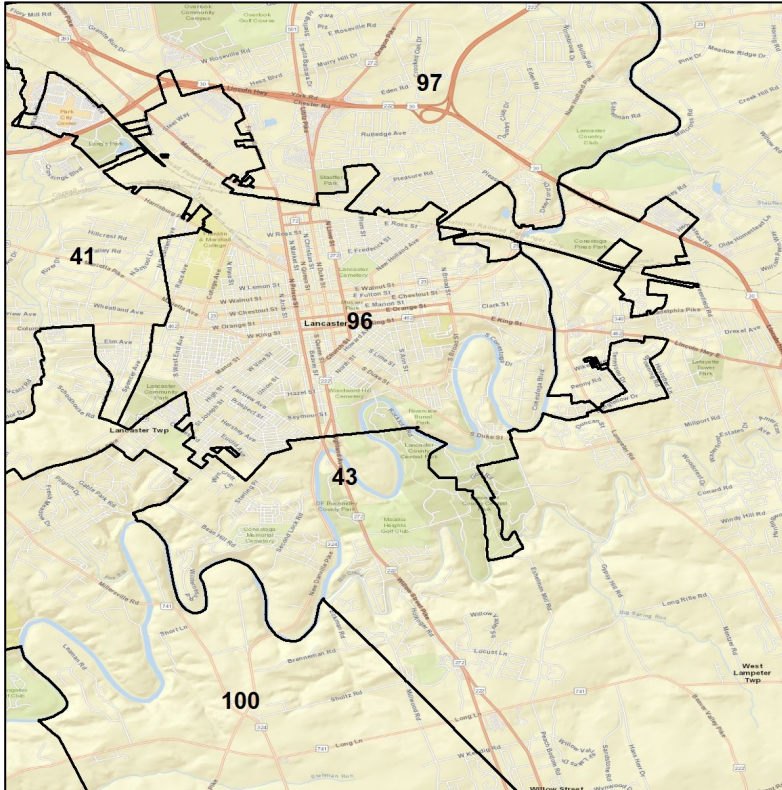


Source:
2020 Decennial Census
2019 American Community Survey 5-Year Estimates

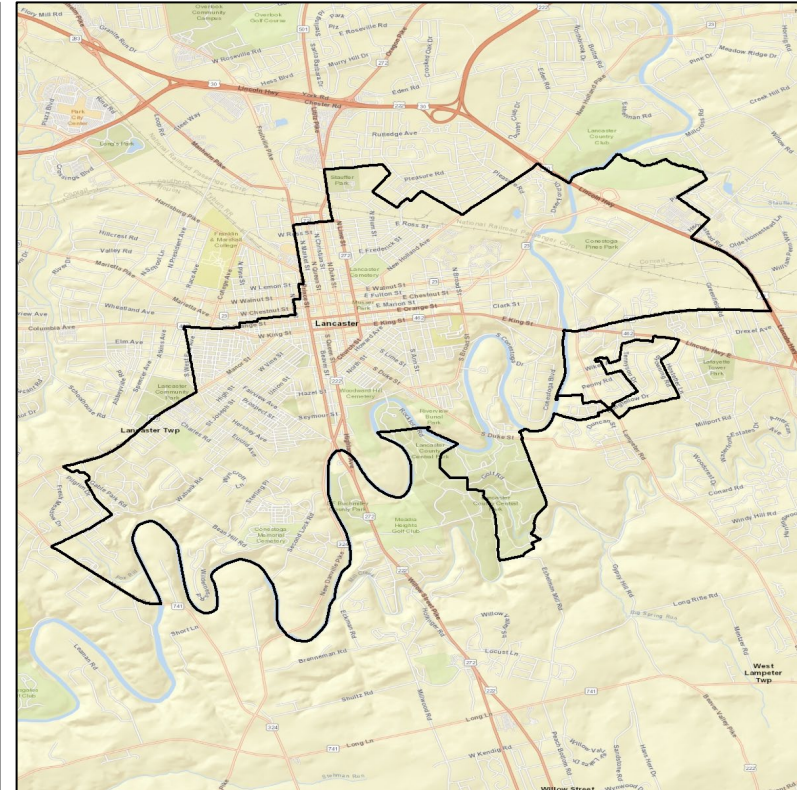
Pennsylvania State House: Lancaster

Context

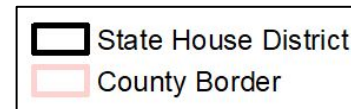
Current



Map AA

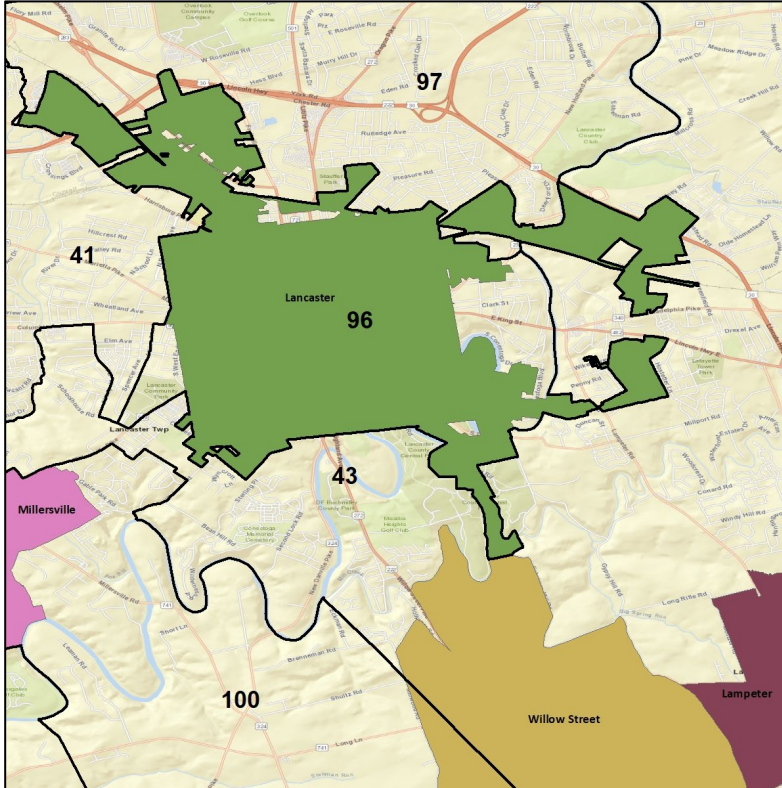


	96	Map AA
Total Population	62,466	64,045
Deviation	-1,587	-8
API VAP	4%	5%
AA VAP	17%	19%
Latino VAP	35%	38%
POC VAP	54%	59%
POC CVAP	49%	53%
POC Total Pop.	60%	64%

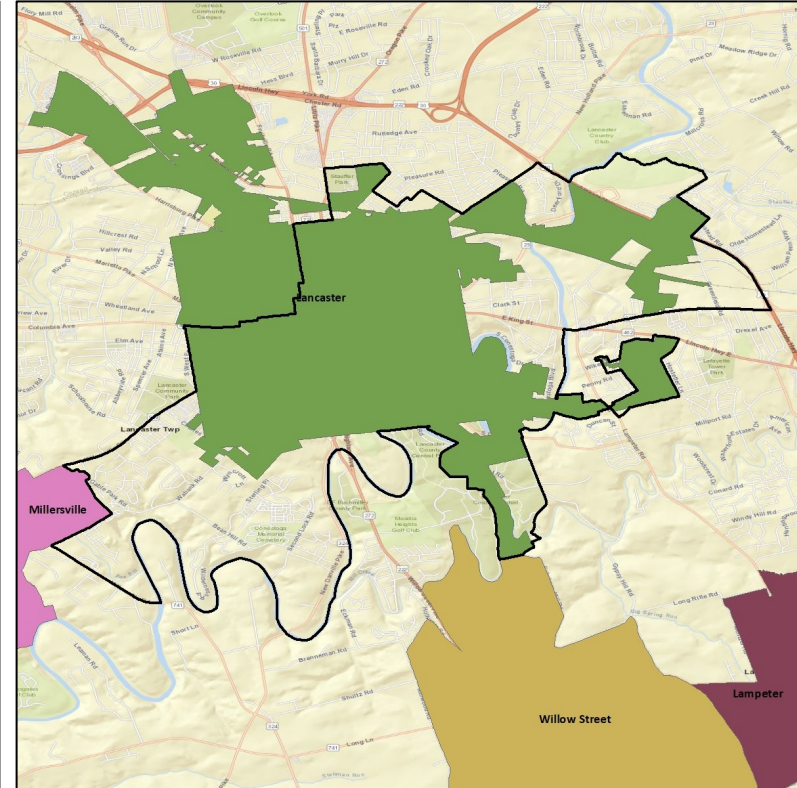


Pennsylvania State House: Lancaster Cities and Places

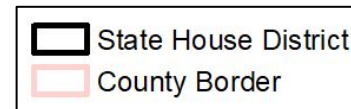
Current



Map AA



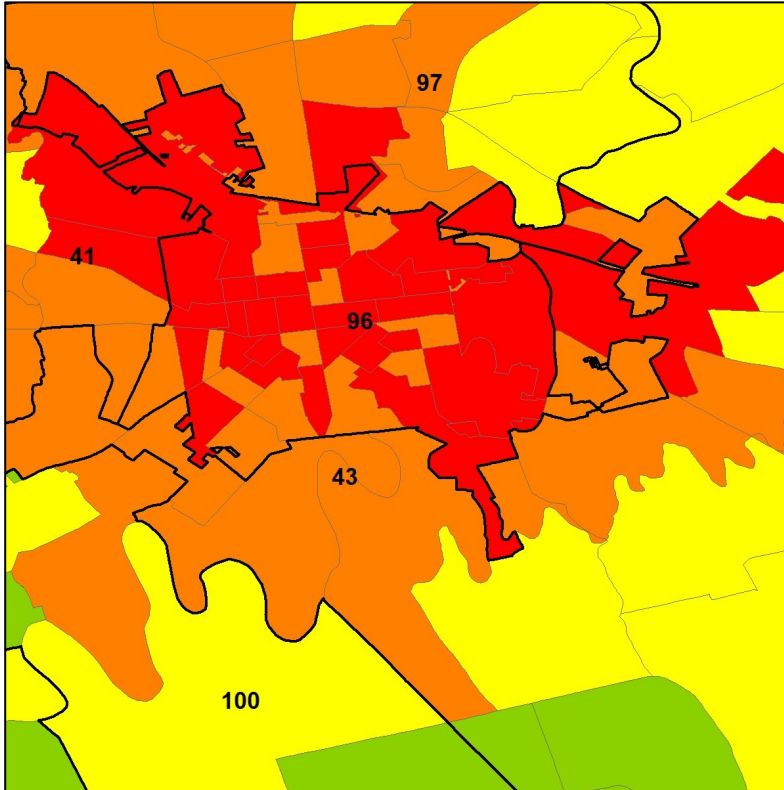
	96	Map AA
Total Population	62,466	64,045
Deviation	-1,587	-8
API VAP	4%	5%
AA VAP	17%	19%
Latino VAP	35%	38%
POC VAP	54%	59%
POC CVAP	49%	53%
POC Total Pop.	60%	64%



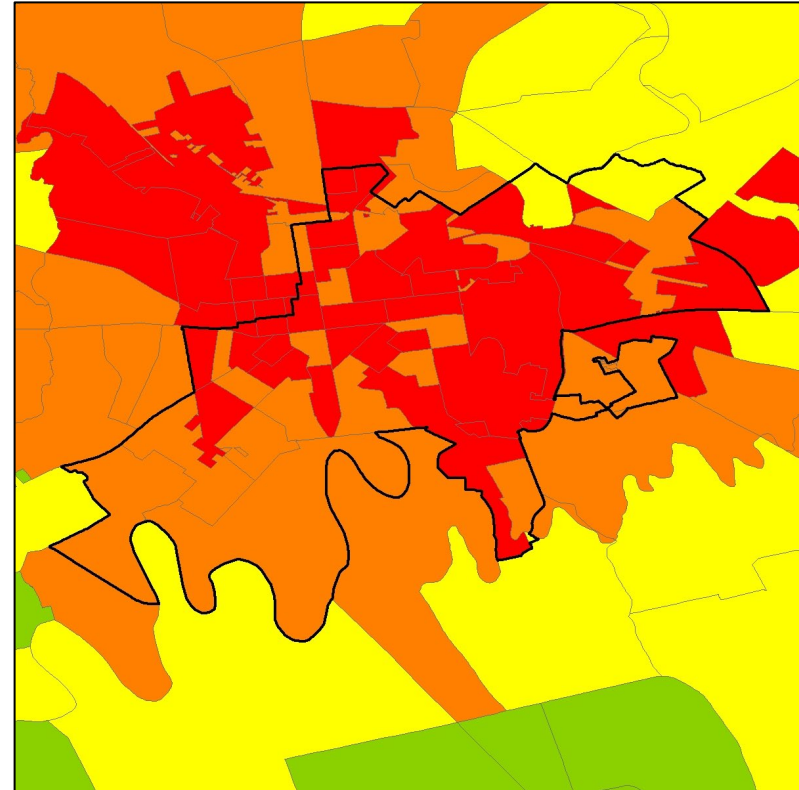
Pennsylvania State House: Lancaster

Concentration of Coalition Partners by Voting Precinct

Current



Map AA



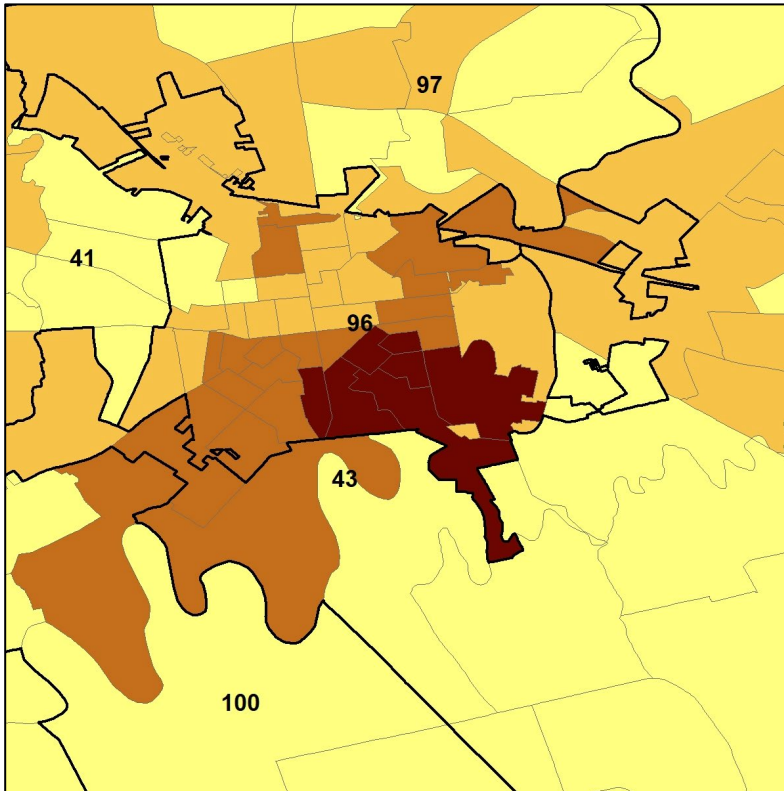
	96	Map AA
Total Population	62,466	64,045
Deviation	-1,587	-8
API VAP	4%	5%
AA VAP	17%	19%
Latino VAP	35%	38%
POC VAP	54%	59%
POC CVAP	49%	53%
POC Total Pop.	60%	64%



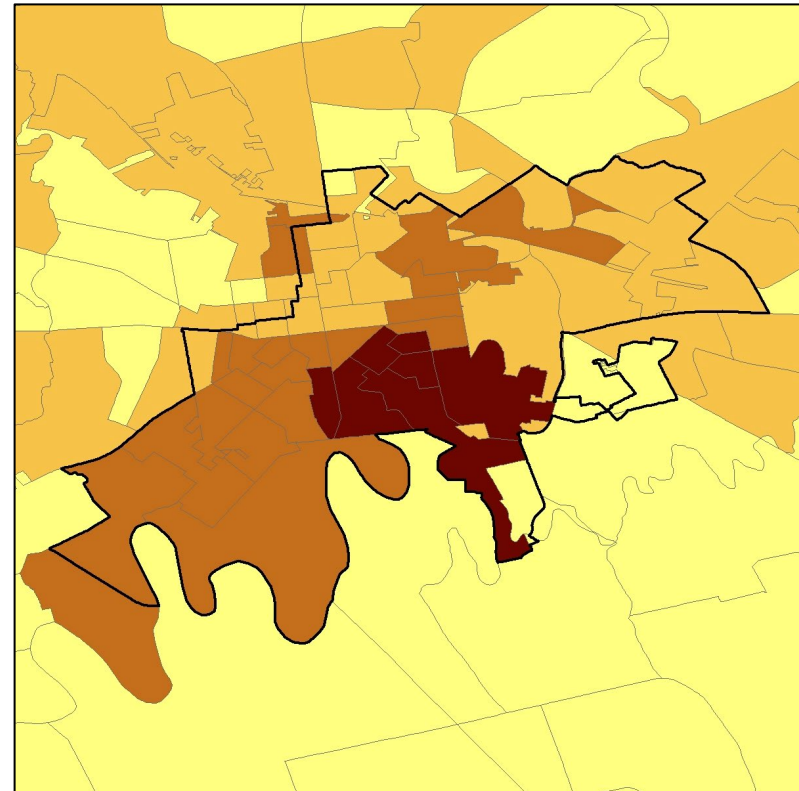
Pennsylvania State House: Lancaster

% People of Color VAP by Voting Precinct

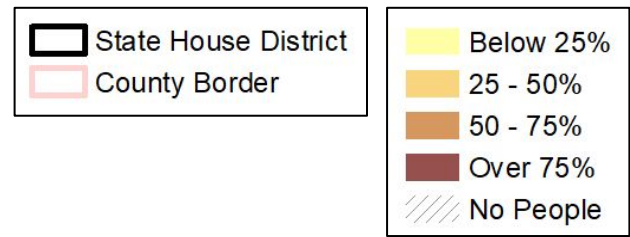
Current



Map AA



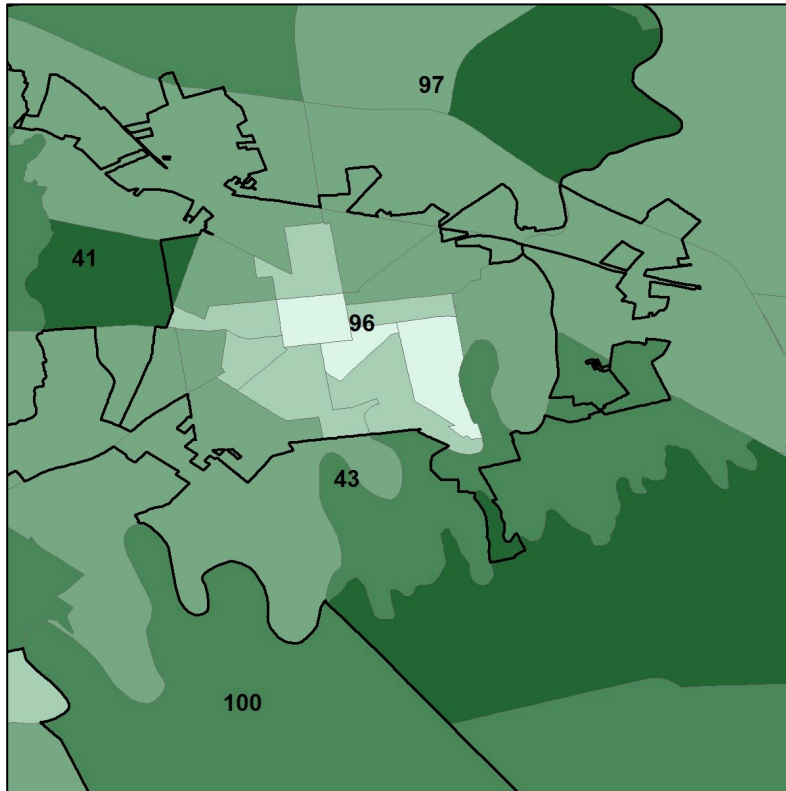
	96	Map AA
Total Population	62,466	64,045
Deviation	-1,587	-8
API VAP	4%	5%
AA VAP	17%	19%
Latino VAP	35%	38%
POC VAP	54%	59%
POC CVAP	49%	53%
POC Total Pop.	60%	64%



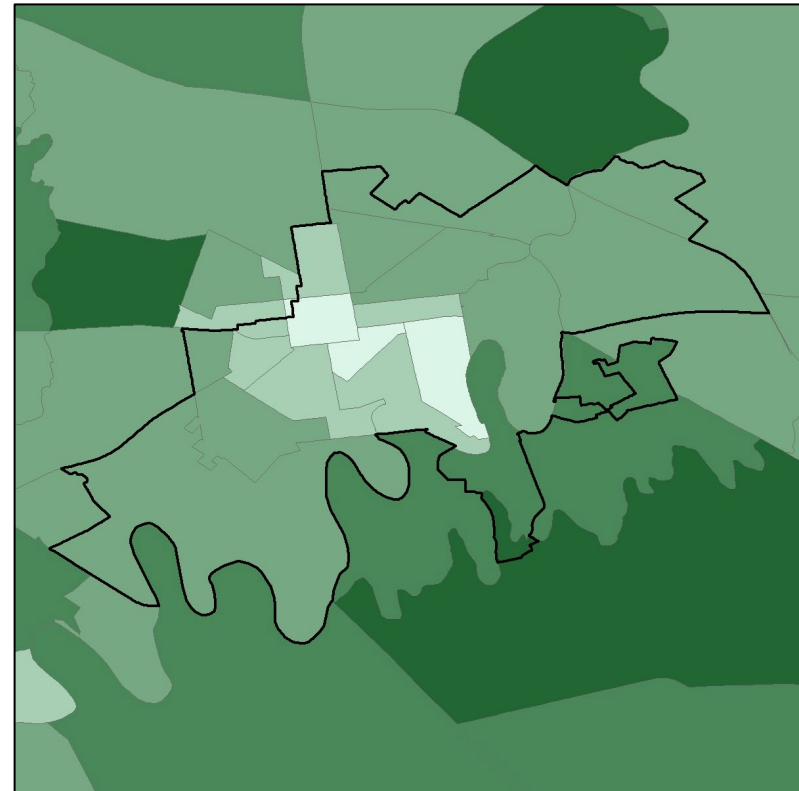
Pennsylvania State House: Lancaster

Median Household Income by Census Block Group

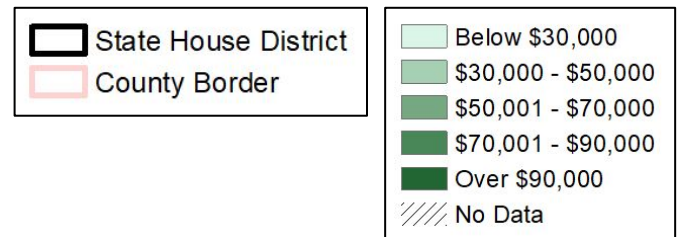
Current



Map AA



	96	Map AA
Total Population	62,466	64,045
Deviation	-1,587	-8
API VAP	4%	5%
AA VAP	17%	19%
Latino VAP	35%	38%
POC VAP	54%	59%
POC CVAP	49%	53%
POC Total Pop.	60%	64%

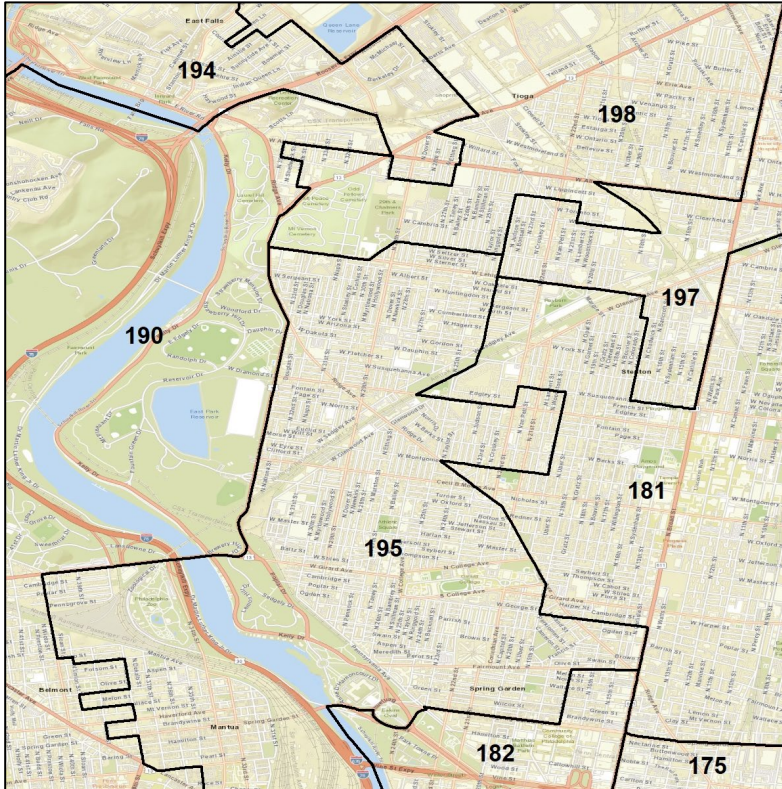


Source:
2020 Decennial Census
2019 American Community Survey 5-Year Estimates

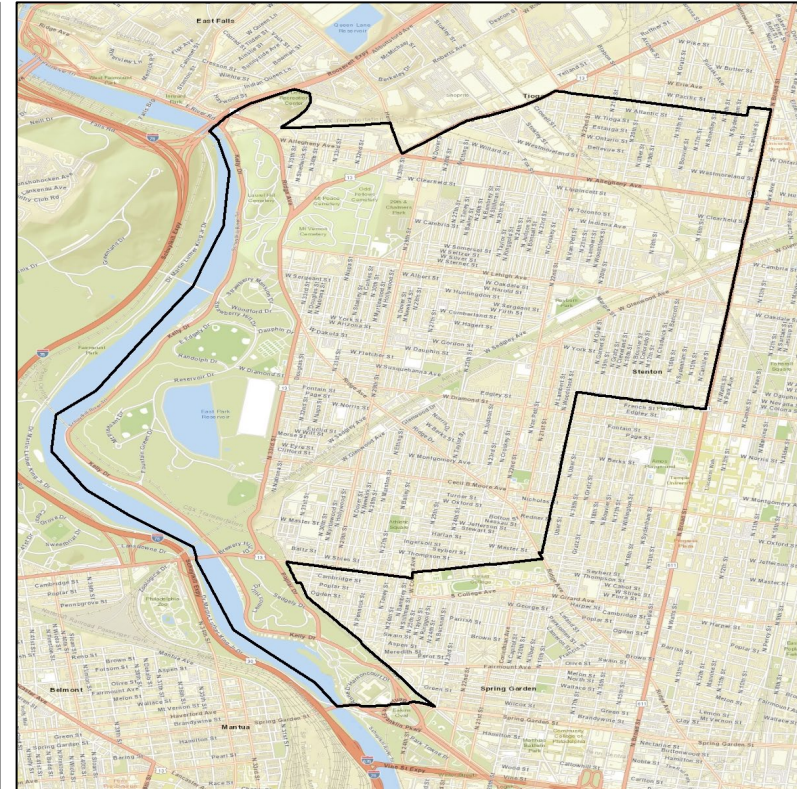
Pennsylvania State House: Philadelphia

Context

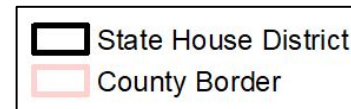
Current



Map AD



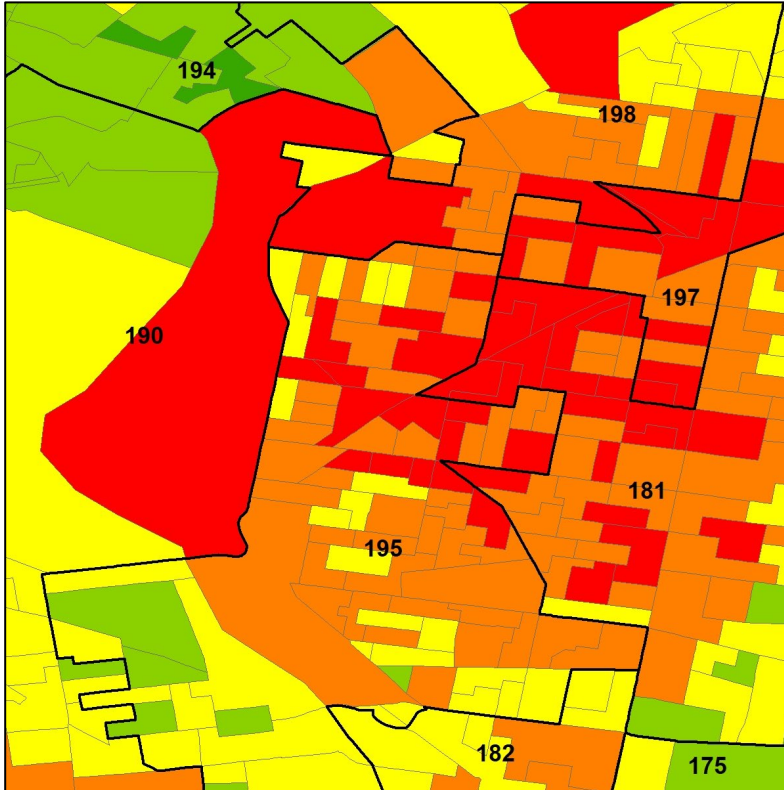
	195	Map AD
Total Population	66,302	64,053
Deviation	2,249	0
API VAP	7%	2%
AA VAP	49%	86%
Latino VAP	5%	4%
POC VAP	61%	92%
POC CVAP	64%	93%
POC Total Pop.	65%	93%



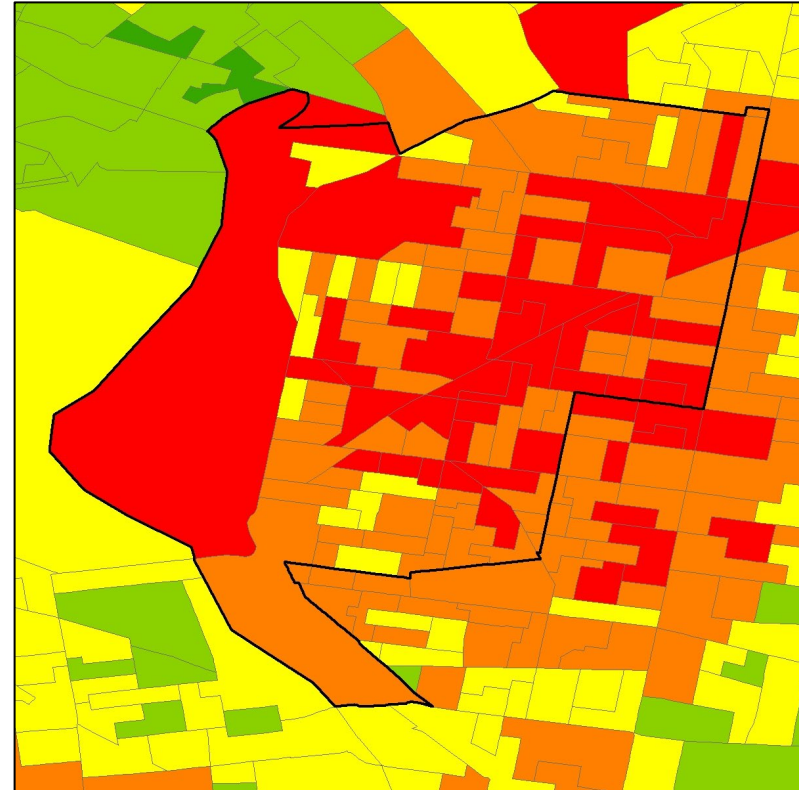
Pennsylvania State House: Philadelphia

Concentration of Coalition Partners by Voting Precinct

Current



Map AD

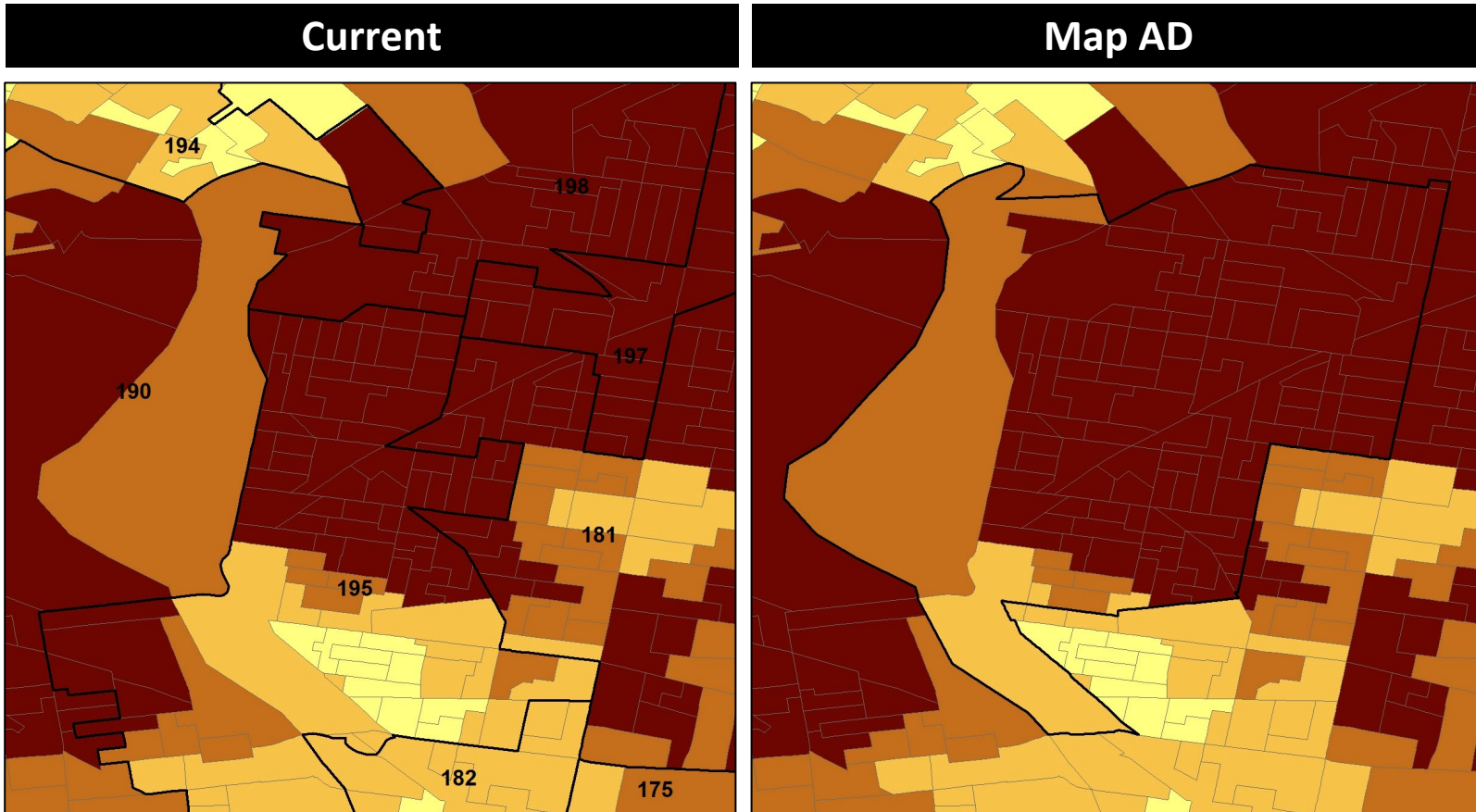


	195	Map AD
Total Population	66,302	64,053
Deviation	2,249	0
API VAP	7%	2%
AA VAP	49%	86%
Latino VAP	5%	4%
POC VAP	61%	92%
POC CVAP	64%	93%
POC Total Pop.	65%	93%

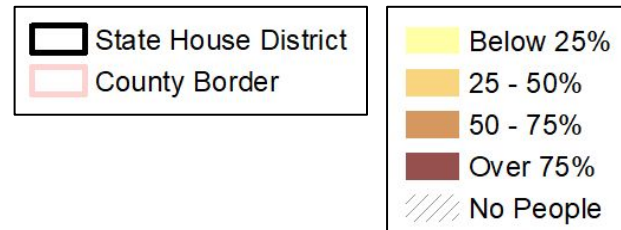


Pennsylvania State House: Philadelphia

% People of Color VAP by Voting Precinct

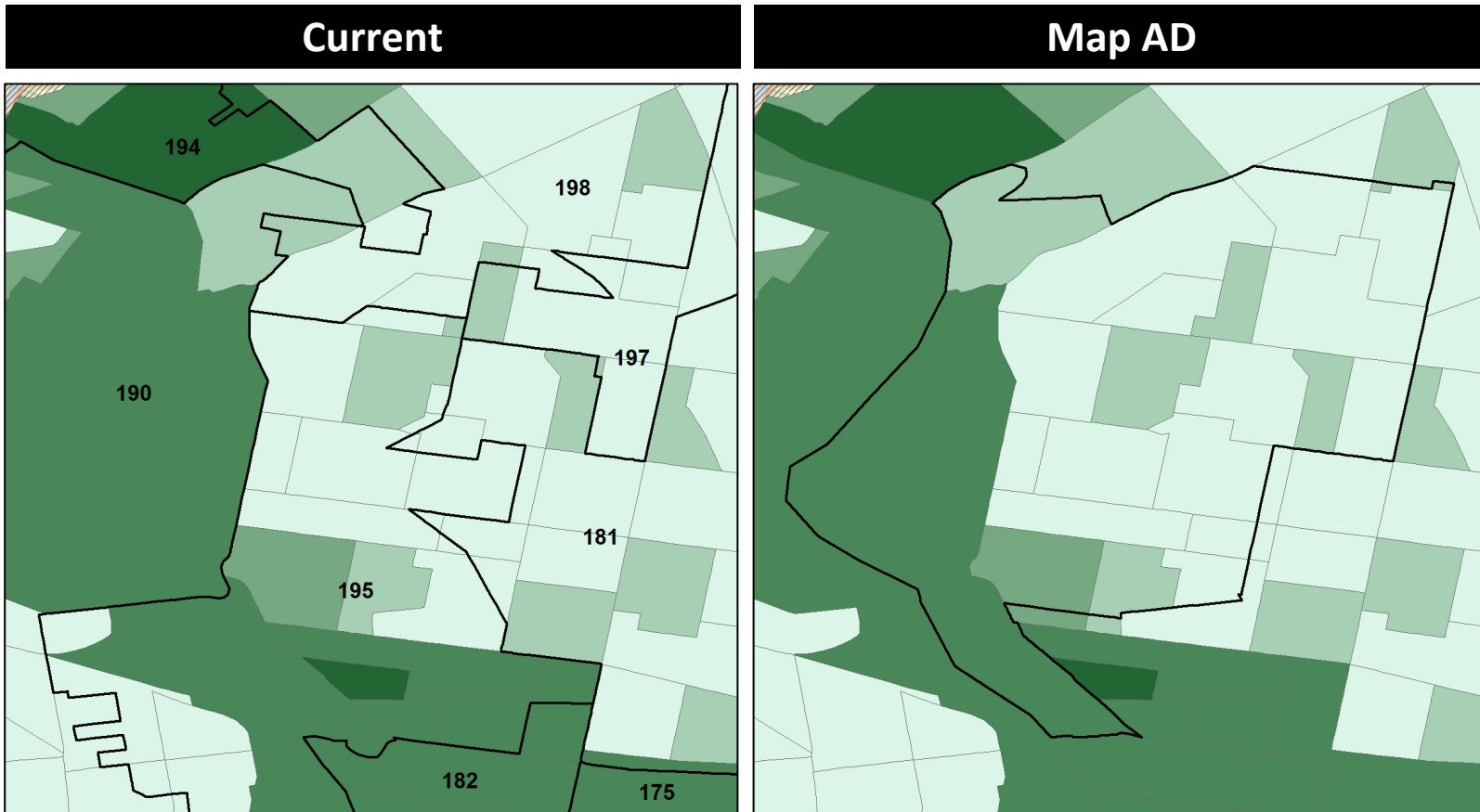


	195	Map AD
Total Population	66,302	64,053
Deviation	2,249	0
API VAP	7%	2%
AA VAP	49%	86%
Latino VAP	5%	4%
POC VAP	61%	92%
POC CVAP	64%	93%
POC Total Pop.	65%	93%

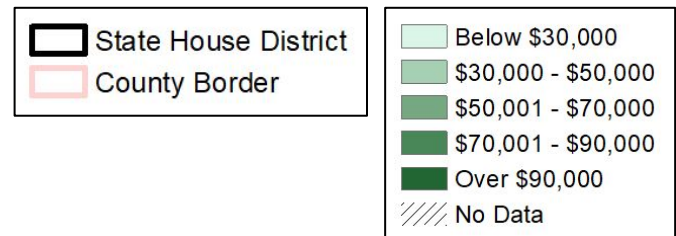


Pennsylvania State House: Philadelphia

Median Household Income by Census Tract



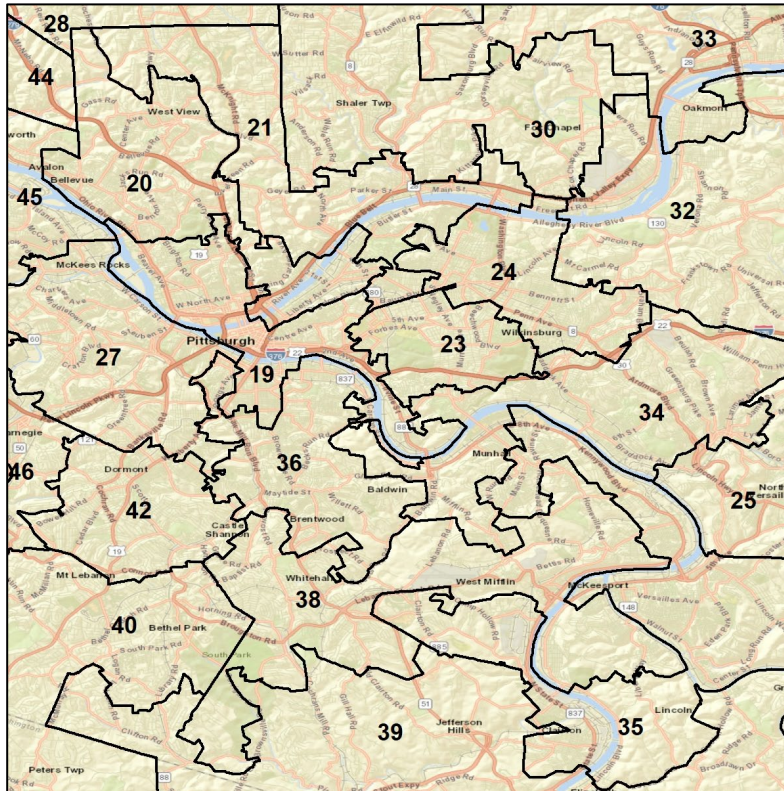
	195	Map AD
Total Population	66,302	64,053
Deviation	2,249	0
API VAP	7%	2%
AA VAP	49%	86%
Latino VAP	5%	4%
POC VAP	61%	92%
POC CVAP	64%	93%
POC Total Pop.	65%	93%



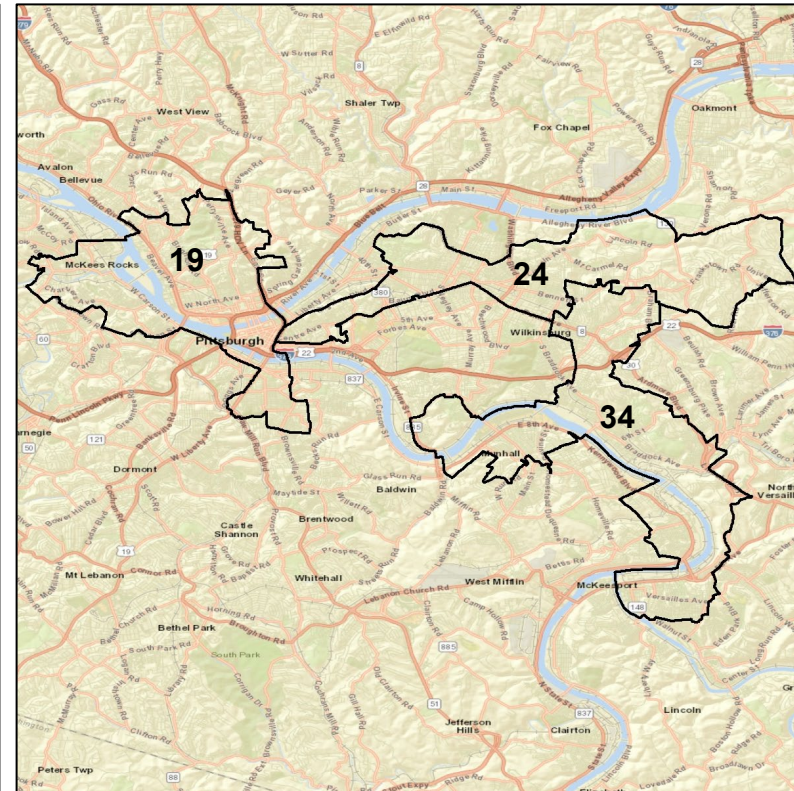
Pennsylvania State House: Allegheny

Context

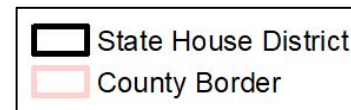
Current



Map AG



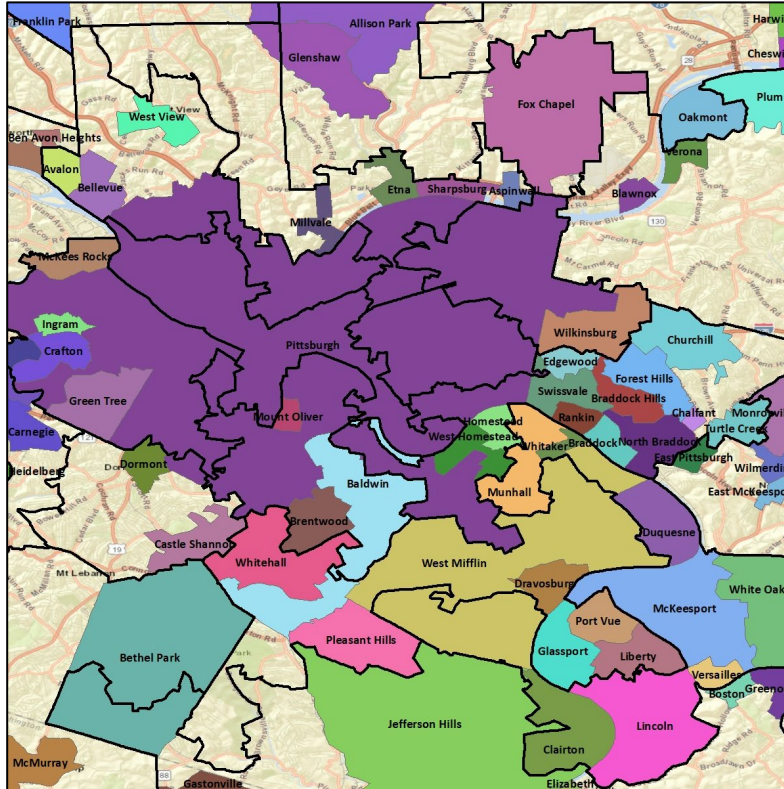
	19	24	34	19*	24*	34*
Population	58,185	57,377	58,235	64,045	64,062	64,076
Deviation	-5,868	-6,676	-5,818	-8	9	23
API VAP	5%	6%	3%	3%	5%	2%
AA VAP	42%	49%	27%	40%	52%	55%
Latino VAP	4%	3%	2%	3%	3%	2%
POC VAP	52%	59%	33%	48%	61%	59%
POC CVAP	48%	56%	28%	44%	58%	56%
POC Total Pop.	56%	63%	38%	54%	65%	65%
AA CVAP	41%	48%	23%	36%	51%	52%



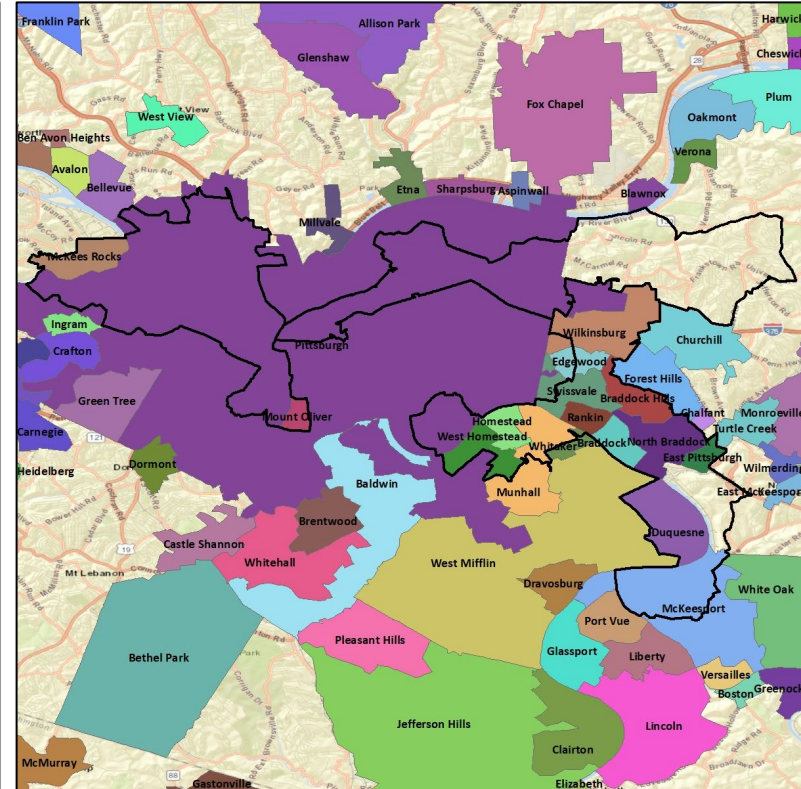
Pennsylvania State House: Allegheny

Cities and Places



Current



Map AG



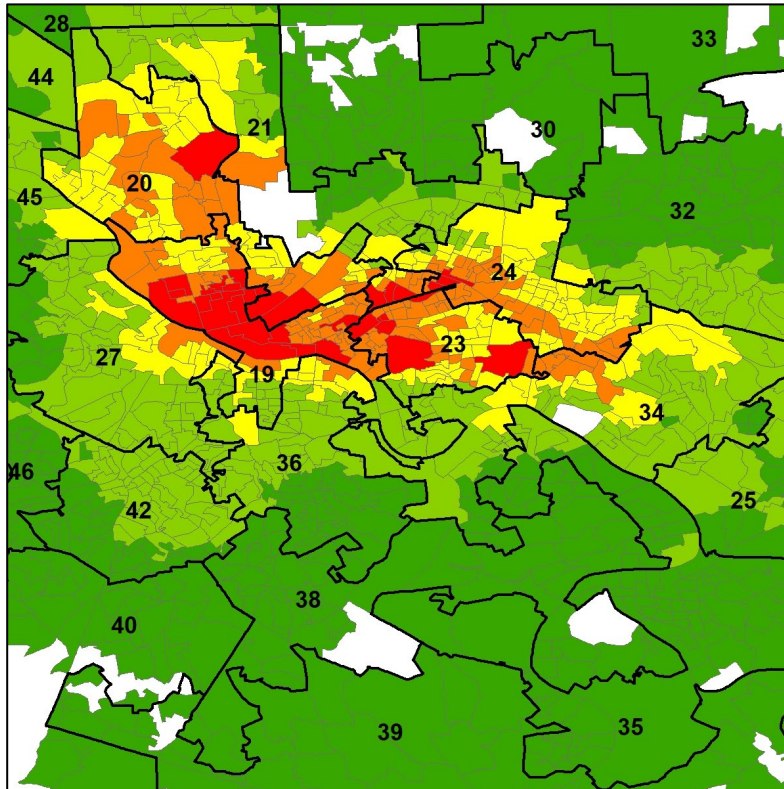
	19	24	34	19*	24*	34*
Population	58,185	57,377	58,235	64,045	64,062	64,076
Deviation	-5,868	-6,676	-5,818	-8	9	23
API VAP	5%	6%	3%	3%	5%	2%
AA VAP	42%	49%	27%	40%	52%	55%
Latino VAP	4%	3%	2%	3%	3%	2%
POC VAP	52%	59%	33%	48%	61%	59%
POC CVAP	48%	56%	28%	44%	58%	56%
POC Total Pop.	56%	63%	38%	54%	65%	65%
AA CVAP	41%	48%	23%	36%	51%	52%

 State House District
 County Border

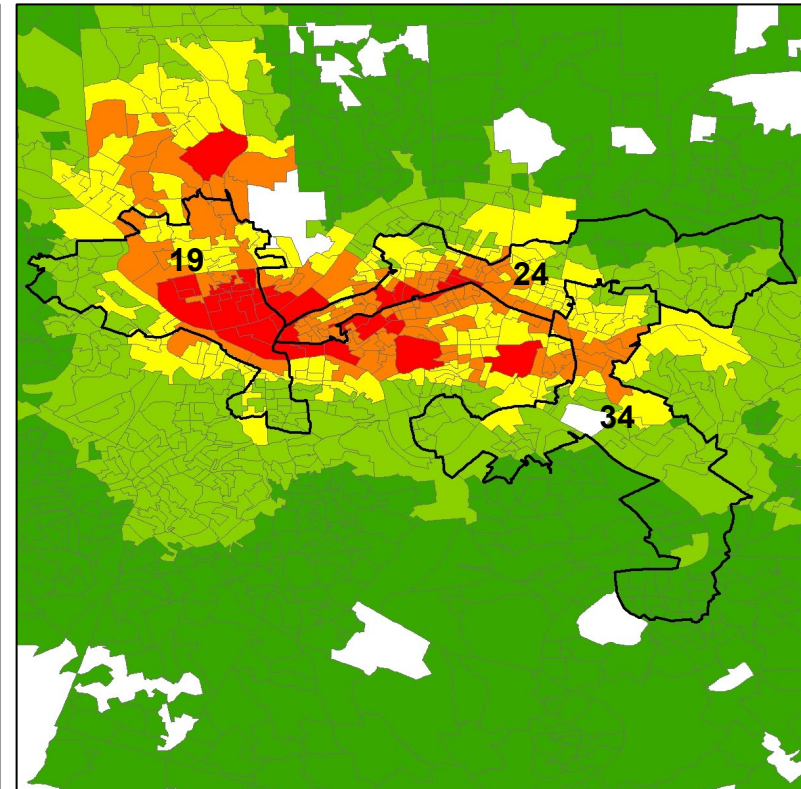
Pennsylvania State House: Allegheny

Concentration of Coalition Partners by Voting Precinct

Current



Map AG



	19	24	34	19*	24*	34*
Population	58,185	57,377	58,235	64,045	64,062	64,076
Deviation	-5,868	-6,676	-5,818	-8	9	23
API VAP	5%	6%	3%	3%	5%	2%
AA VAP	42%	49%	27%	40%	52%	55%
Latino VAP	4%	3%	2%	3%	3%	2%
POC VAP	52%	59%	33%	48%	61%	59%
POC CVAP	48%	56%	28%	44%	58%	56%
POC Total Pop.	56%	63%	38%	54%	65%	65%
AA CVAP	41%	48%	23%	36%	51%	52%

State House District

County Border

Low

Medium-Low

Medium

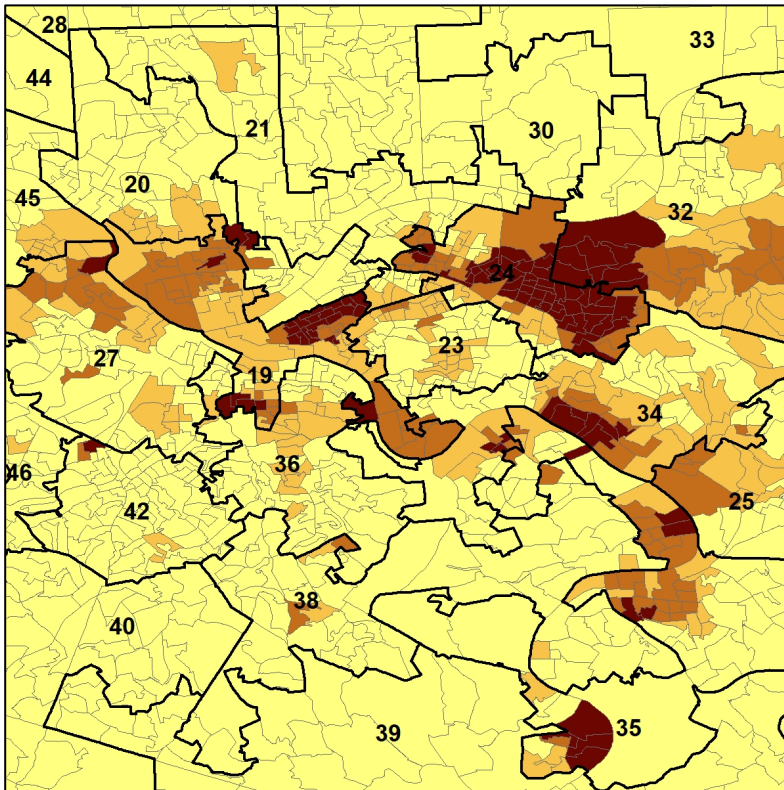
Medium-High

High

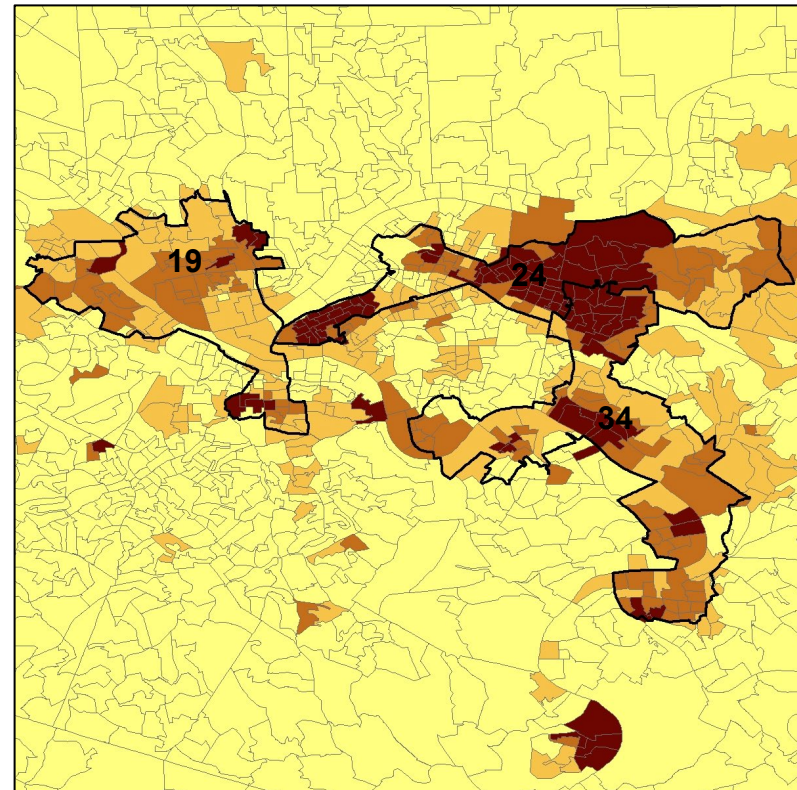
Pennsylvania State House: Allegheny

% People of Color VAP by Voting Precinct

Current



Map AG



	19	24	34	19*	24*	34*
Population	58,185	57,377	58,235	64,045	64,062	64,076
Deviation	-5,868	-6,676	-5,818	-8	9	23
API VAP	5%	6%	3%	3%	5%	2%
AA VAP	42%	49%	27%	40%	52%	55%
Latino VAP	4%	3%	2%	3%	3%	2%
POC VAP	52%	59%	33%	48%	61%	59%
POC CVAP	48%	56%	28%	44%	58%	56%
POC Total Pop.	56%	63%	38%	54%	65%	65%
AA CVAP	41%	48%	23%	36%	51%	52%

State House District

County Border

Below 25%

25 - 50%

50 - 75%

Over 75%

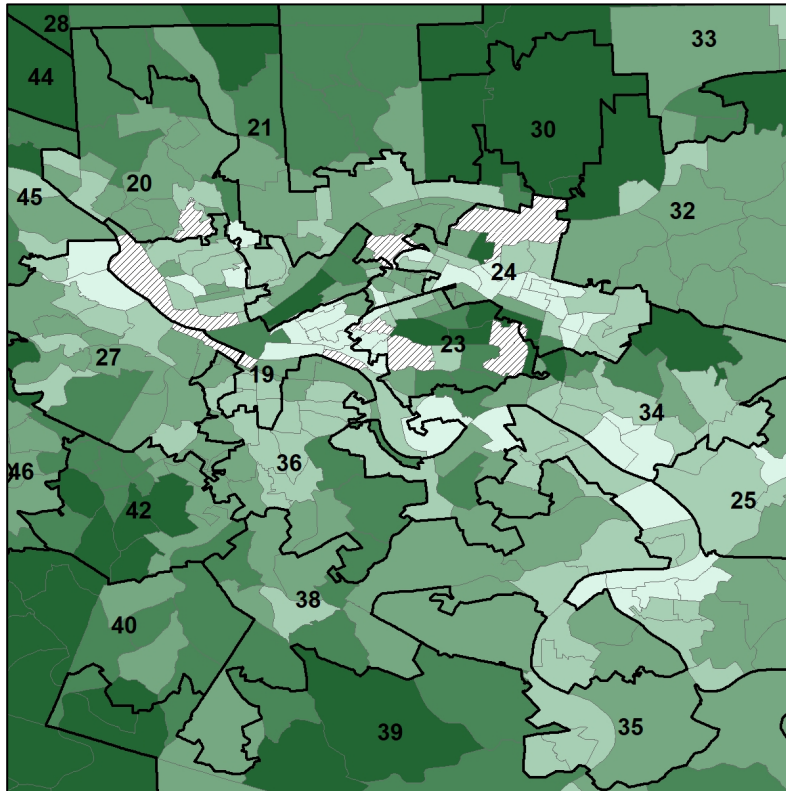
No People

Source: 2020 Decennial Census

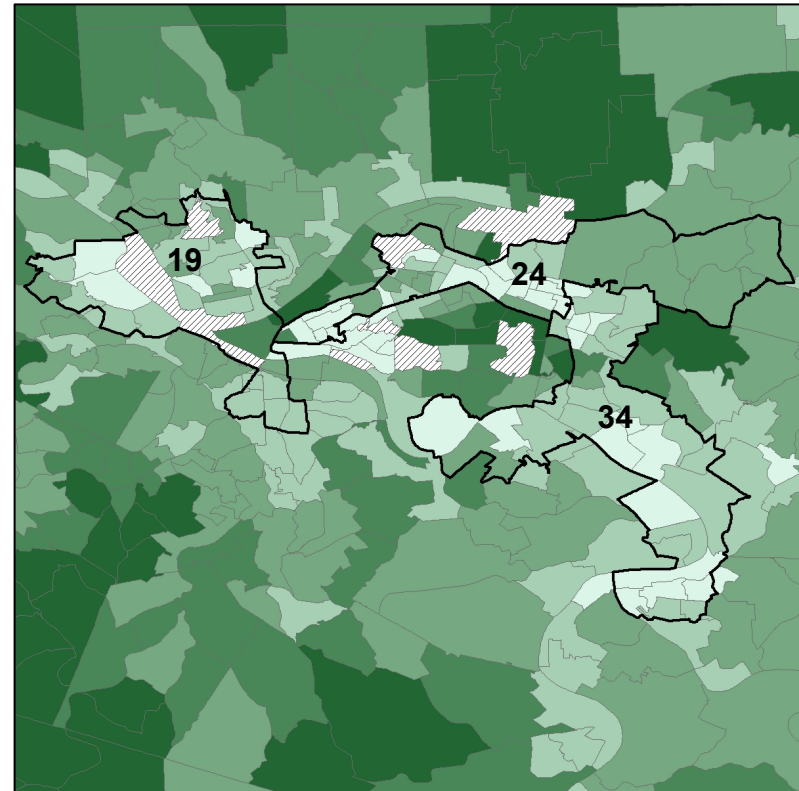
Pennsylvania State House: Allegheny

Median Household Income by Census Tract

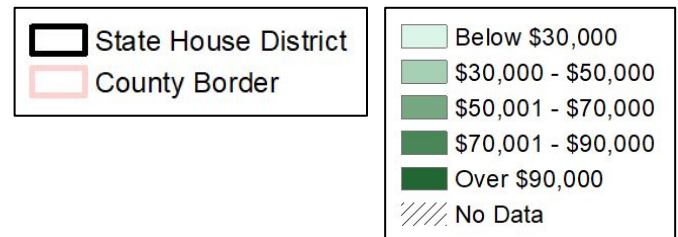
Current



Map AG



	19	24	34	19*	24*	34*
Population	58,185	57,377	58,235	64,045	64,062	64,076
Deviation	-5,868	-6,676	-5,818	-8	9	23
API VAP	5%	6%	3%	3%	5%	2%
AA VAP	42%	49%	27%	40%	52%	55%
Latino VAP	4%	3%	2%	3%	3%	2%
POC VAP	52%	59%	33%	48%	61%	59%
POC CVAP	48%	56%	28%	44%	58%	56%
POC Total Pop.	56%	63%	38%	54%	65%	65%
AA CVAP	41%	48%	23%	36%	51%	52%

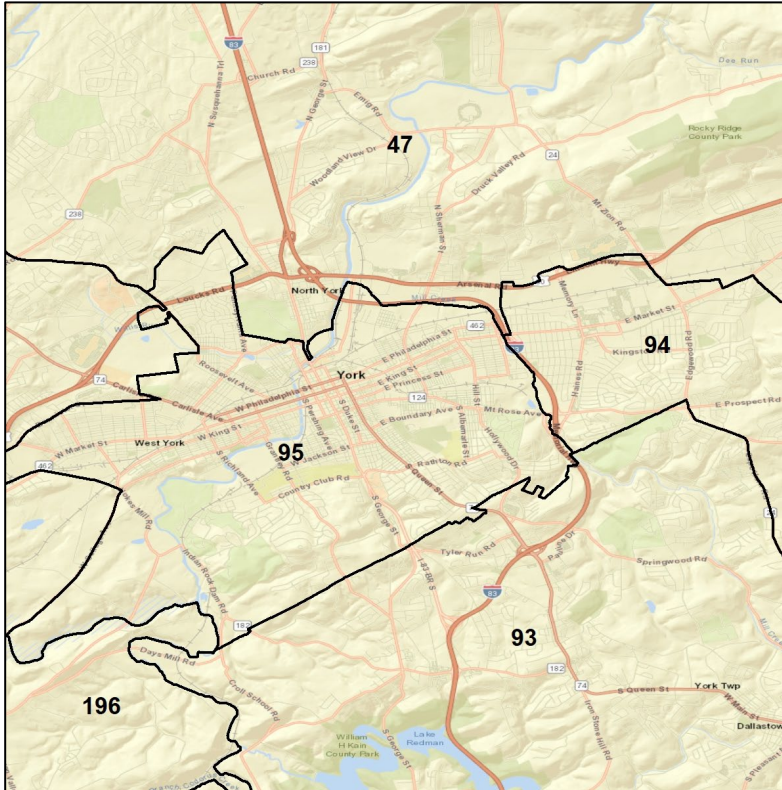


Source:
2020 Decennial Census
2019 American Community Survey 5-Year Estimates

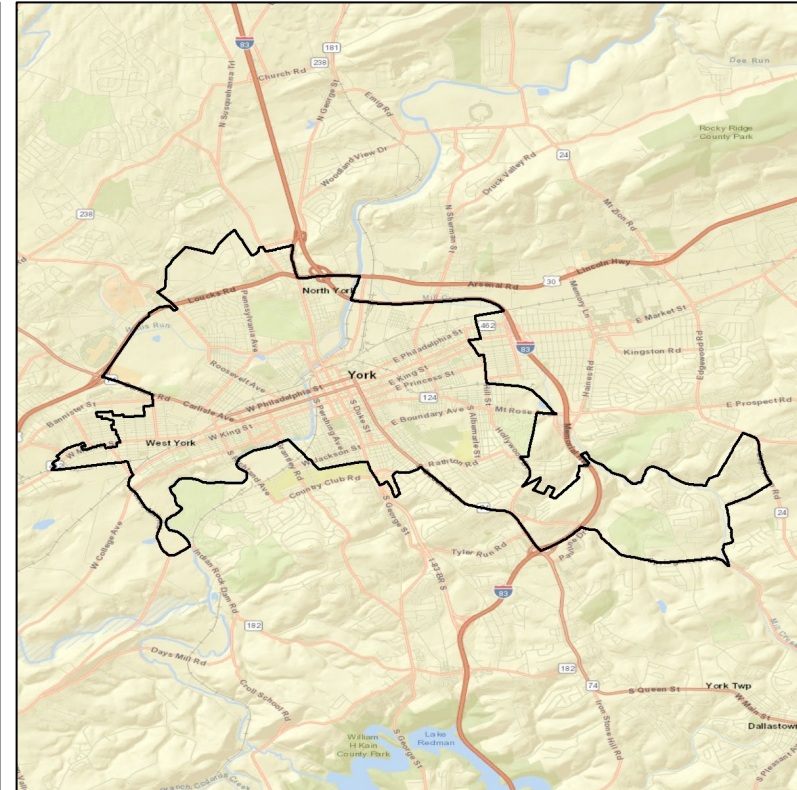
Pennsylvania State House: York

Context

Current



Map AB

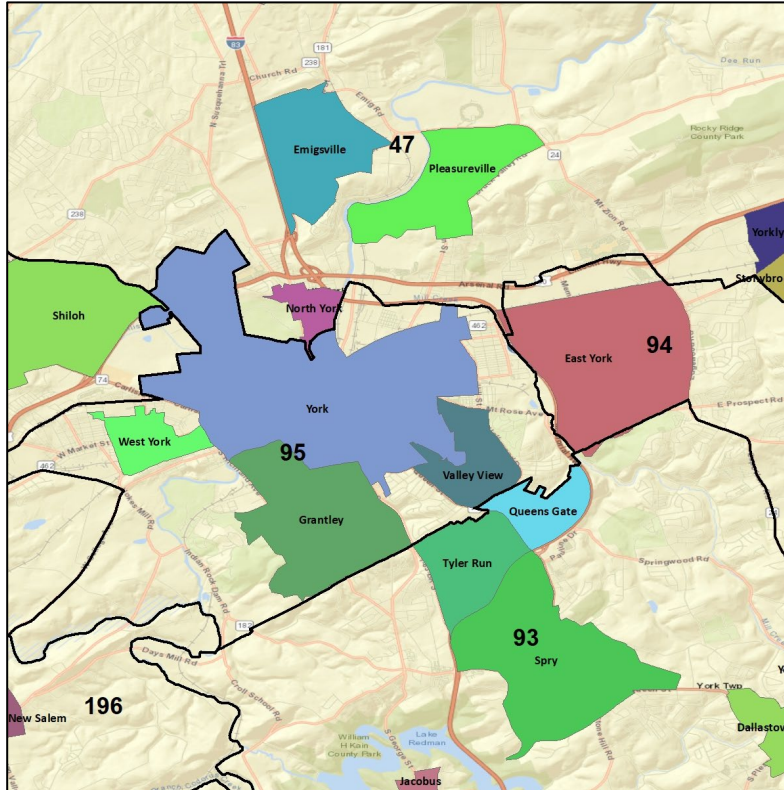


	95	Map AB
Total Population	66,504	64,062
Deviation	2,451	9
API VAP	2%	2%
AA VAP	22%	24%
Latino VAP	25%	27%
POC VAP	48%	52%
POC CVAP	40%	44%
POC Total Pop.	54%	58%

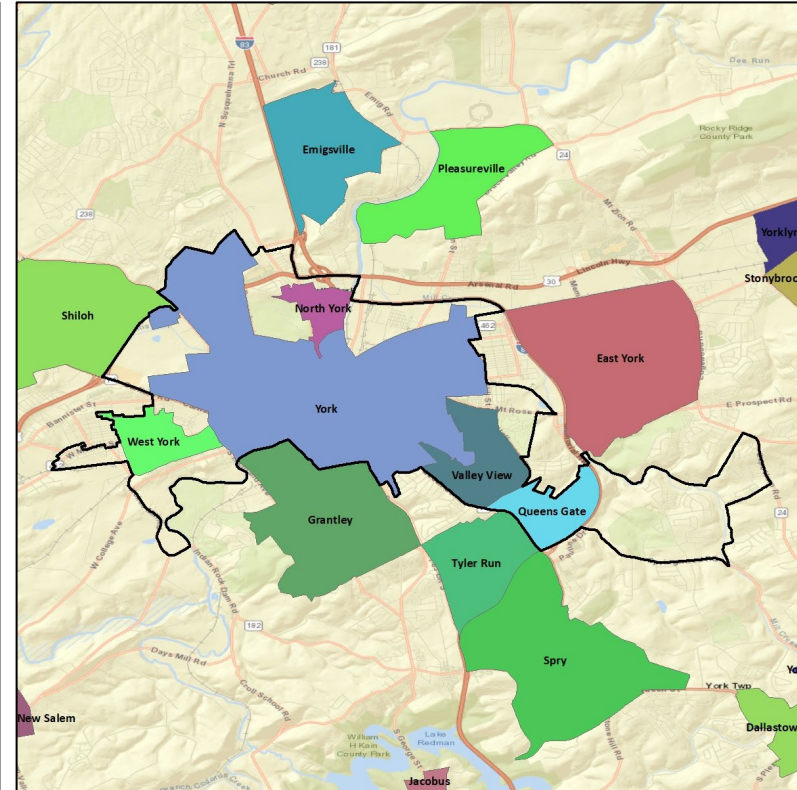
State House District
 County Border

Pennsylvania State House: York Cities and Places

Current



Map AB



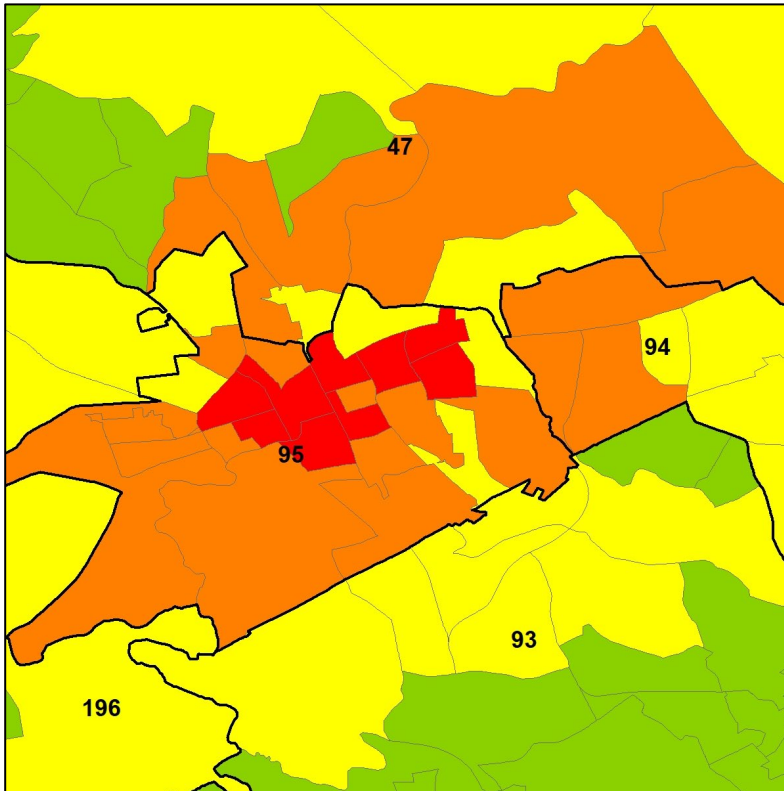
	95	Map AB
Total Population	66,504	64,062
Deviation	2,451	9
API VAP	2%	2%
AA VAP	22%	24%
Latino VAP	25%	27%
POC VAP	48%	52%
POC CVAP	40%	44%
POC Total Pop.	54%	58%

State House District
 County Border

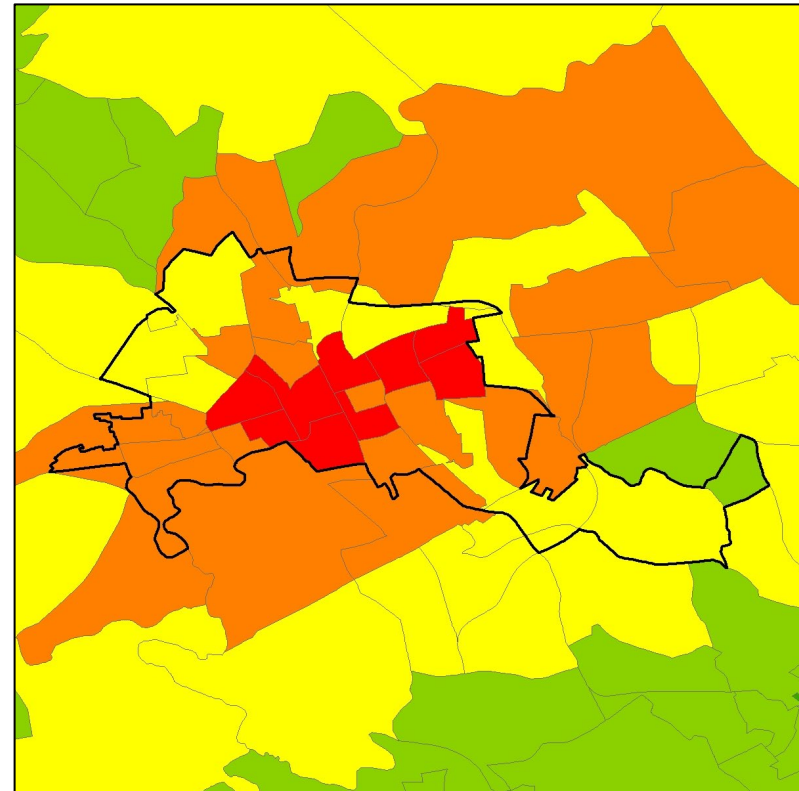
Pennsylvania State House: York

Concentration of Coalition Partners by Voting Precinct

Current



Map AB



	95	Map AB
Total Population	66,504	64,062
Deviation	2,451	9
API VAP	2%	2%
AA VAP	22%	24%
Latino VAP	25%	27%
POC VAP	48%	52%
POC CVAP	40%	44%
POC Total Pop.	54%	58%

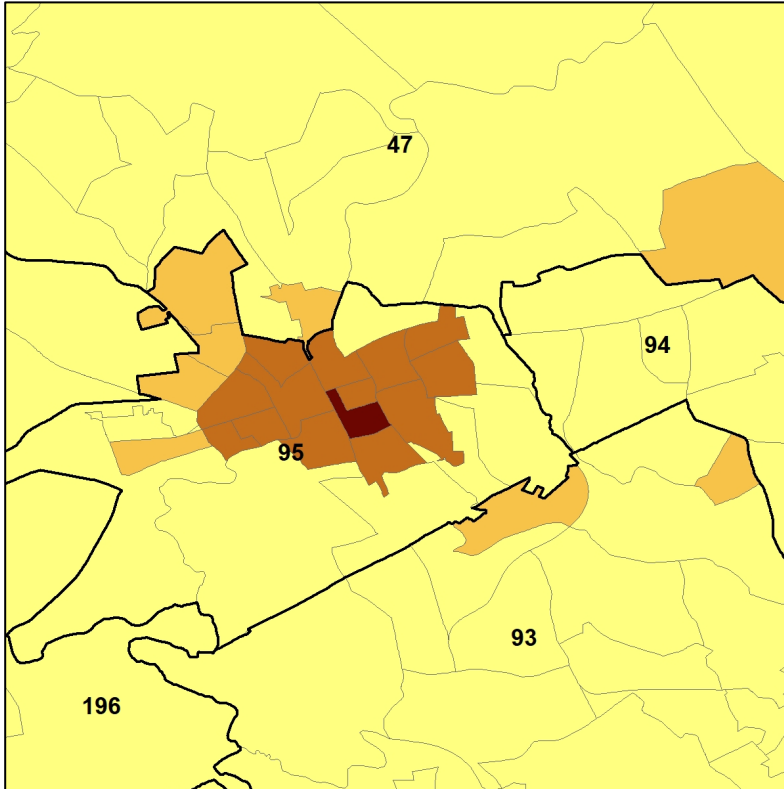
State House District
 County Border

Low
 Medium-Low
 Medium
 Medium-High
 High

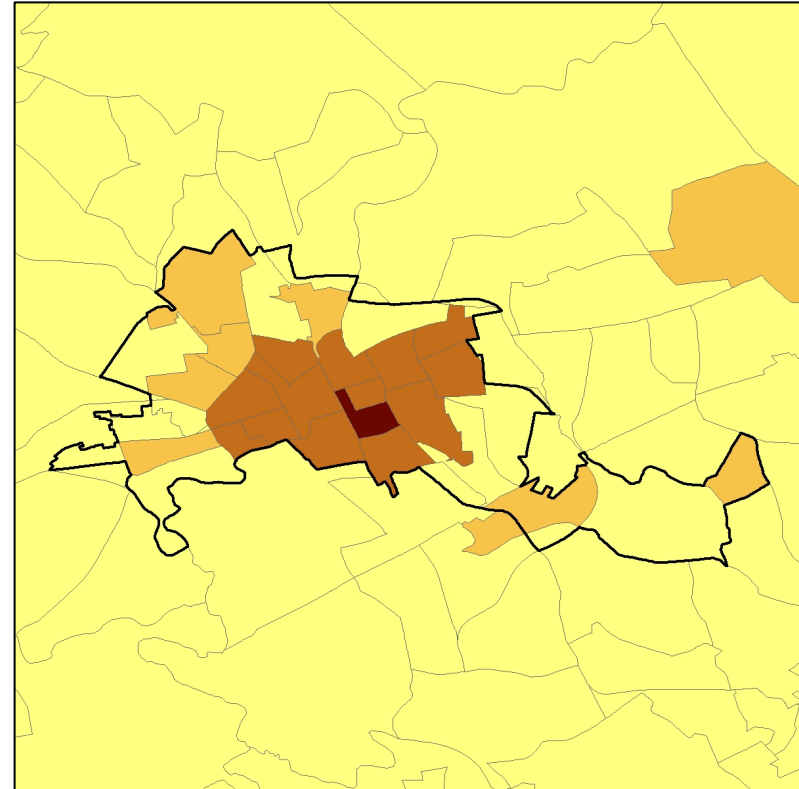
Pennsylvania State House: York

% People of Color VAP by Voting Precinct

Current



Map AB



	95	Map AB
Total Population	66,504	64,062
Deviation	2,451	9
API VAP	2%	2%
AA VAP	22%	24%
Latino VAP	25%	27%
POC VAP	48%	52%
POC CVAP	40%	44%
POC Total Pop.	54%	58%

State House District

County Border

Below 25%

25 - 50%

50 - 75%

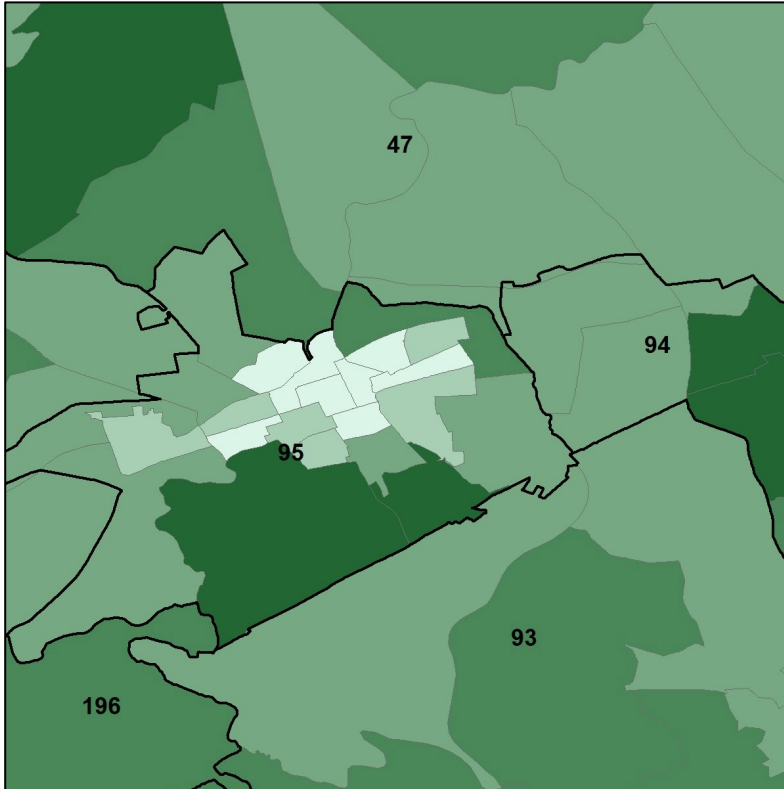
Over 75%

No People

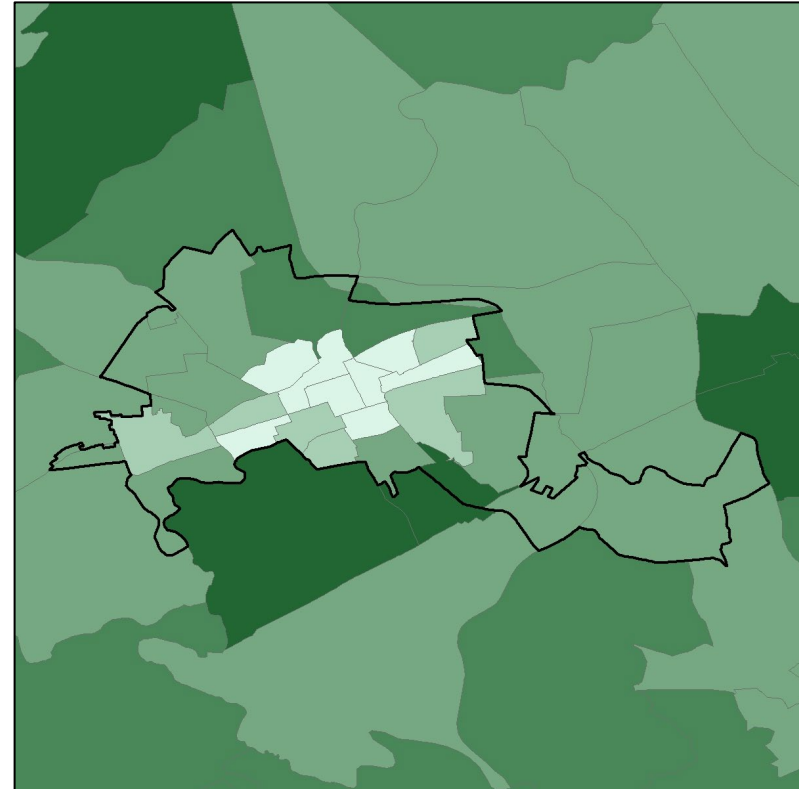
Pennsylvania State House: York

Median Household Income by Census Block Group

Current



Map AB



	95	Map AB
Total Population	66,504	64,062
Deviation	2,451	9
API VAP	2%	2%
AA VAP	22%	24%
Latino VAP	25%	27%
POC VAP	48%	52%
POC CVAP	40%	44%
POC Total Pop.	54%	58%

State House District
 County Border

Below \$30,000
 \$30,000 - \$50,000
 \$50,001 - \$70,000
 \$70,001 - \$90,000
 Over \$90,000
 No Data

Source: 2020 Decennial Census
2019 American Community Survey 5-Year Estimates